



Introduction

LC Africa is a camp management and hospitality consortium delivering camp services solutions for international clients supported by local expertise.

LC Africa has been successful in managing accounts and entering into long-term partnerships due to our personalized and tailored approach.

LC Africa has expertise in camp construction including civil camps, containerized camps as well as prefabs and camp management including designing and supplying rapid turnkey camp solutions.

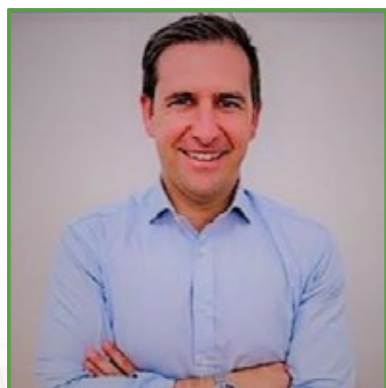
We enable companies establish operations in remote site conditions. We help clients across the full life-cycle of remote sites facilities, from initial camp planning and operations design, to the provision of built structures, and a comprehensive range of integrated remote site support services, including food supply and catering, housekeeping, fuel supply and power generation in harsh environments.

Company directors



Omri Cohen
Director & Founder

Born in Israel, Omri has 25 years experience building and managing companies, including 15 in East Africa. Omri is a co-founder of ISM Africa, and brings exceptional experience with cleantech and renewable energy. Omri has operated in Kenya, Somalia, Mozambique, South Sudan, DRC, Uganda, Rwanda, Burundi and Tanzania. Omri earned a BA degree (cum laude) in Government, Diplomacy Management and Strategy from the Herzliya University.



Paul Williamson
Director & Founder

Born in Kenya, Paul has 15 years experience building companies both in the United Kingdom and in East Africa. Paul is one of the co-founders of ISM Africa, a group of companies with interests in construction, local manufacturing and assembly (EVs, Charging Systems and Solar), and integrating technologies to provide high functionality viable solutions. Paul holds a Business Law Degree from the London Met University.

Our experience

We have been in operations for more than 20 years in East Africa and Central Africa.

We have attached below some of the projects we have involved with over the last 8-10 years:

1. **BASE (Titanium)** - 2017 - Kenya - Construction Camp - Value USD 350,000
2. **Gas Petro** - 2017 - Kenya - Two Floor Office (Flat Pack) Containers - Value USD 300,000
3. **IMA World Health** - 2017- South Sudan - Medical Clinics - Value USD 300,000
4. **SAAB Defence** - 2018- Somalia - 120 Man Camp (Flat pack and prefabs) - Value USD 200,000
5. **Geita Mine** - 2018 - Tanzania- Warehouse and Flat Pack Camp - Value USD 1,000,000
6. **Copper Belt Hotel** - Congo- Hotel Prefabricated Camp - Value USD 250,000
7. **Tullow Oil** - 2019 - Kenya - Camp dis-assemble and re-assemble - Value USD 250,000
8. **Razel-Bec**- 2021- Kenya - Construction site dis-assemble - Value USD 200,000
9. **Lake Turkana wind farm** camp construction and management - USD 6,500,000
10. **Somalia UN accommodation project** - USD 4,500,000

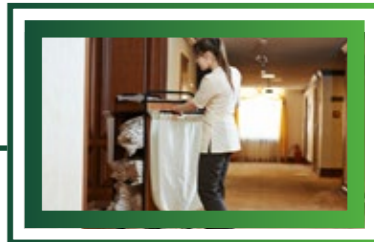
Company certificates



Our services



Camp Inspection & Audit



Camp Management & Recreation Services



Access Control & Camp Security



Camp Maintenance



Camp Construction



Waste Management & Environmental Services



CSR Programs & Training Plans



Supply of Water/Power/Fuel



Health & Safety
Food Safety
Camp Policies
Hygiene Policies



Communication



Procurement

All around the world with the focus on Africa

LC Africa develops partnerships with internationally recognised companies, with the intention of penetrating the African market. Jointly we develop the products to suit the local market and work in partnership to enhance efficiencies on logistics, sales and operations.

A cleaner world

The movement toward reducing our impact on the globe is one of the most pressing concerns of our time. LC Africa invests in projects and services targeting improved operational efficiency, renewable energy and other sustainable infrastructure

A better world

Food and water security is an urgent global issue. The reasons behind food insecurity are numerous, complex and multifaceted. LC Africa works with both private and government sectors to improve reliability on production, agricultural impact on the environment, water scarcity, changing of consumption trends and price volatility



Our responsibility

Corporate social responsibility

We believe in upholding values that help make us a model business partner and an employer of choice. We are committed to maintaining an ethical, safe, and environmentally sustainable culture. These principles govern the way we do business. They help us maintain a culture that respects the safety and wellbeing of every employee and visitor at our locations. They inspire us to promote energy efficiency and waste reduction for ourselves and our customers.

Ethics

Holding ourselves to the utmost moral standards is a cornerstone of our business. Every partnership, transaction and interaction is managed with integrity, fairness, and respect. To stay true to this philosophy, we require all employees to review and sign an annual Code of Business Ethics and Conduct. This helps them identify areas of potential conflict and offers guidance in recognizing and managing ethical issues.

Sustainability

Sustainability is an important strategic priority and a company-wide responsibility at ISM. We aim for Lean process improvements while helping our customers make progress in lighting efficiency, energy management, renewable energy, water and waste mitigation, and green procurement.



Community

Giving back to our communities is an essential part of who we are. Every year, we are humbled by our employees' generosity. Their charitable works range from mentoring and education to hosting toy drives and donating food and personal care items to those in need. All our projects include a CSR community program which we execute together with the projects including employing and training local employees

Continuous improvement

Lean practice is a vital part of our daily culture. That's why we consistently evaluate our processes to identify opportunities for improvement. To foster positive changes across all aspects of our company, we require all employees to take Lean white belt training while offering them opportunities for further education.

Our customers are seeing the benefits. Our Lean practice helps us amplify their operations and provide solutions that could positively influence their bottom line. If the introduction of a simple process change adds value to their business, we've done our job.

Green eco-camps



Zero water waste, zero emissions & zero energy waste

But what does this look like in reality? It means offering industry players the required technological solutions to move towards greener offshore and remote operations. We are focused on the entire flowsheet, but with an emphasis on areas where we see a lot of benefits to our environment.

- Camps run on 100% Green Energy Solutions
- Electric vehicles for internal operations
- Waste to gas solutions
- Purified clean water for consumption and camp operations
- Hot water supply based on solar
- Organic farm run by local communities
- CSR Programs for clinics and schools
- Constructions with renewable materials

Our camps not only serve remote teams but come with CSR projects and packages like schools and clinics that also benefit the host communities. All our constructions are done using socially and environmentally responsible design principles through selection of location, materials, energy, and waste management for the remote camp.

Litecon Africa is part ISM Africa, a group of companies, with interests in Manufacturing, renewable energy, trading, food security and project services. With an active presence in Kenya, LiteCon strive to preserve our environment's natural capital: water, soil, and air.

LC Africa Key Advantages

- Promoting sustainability through the supply chain
- Zero pollution of emissions to air, solid waste to land and discharges of water, EMS, waste management and wastewater management
- Climate change and adaptation – minimizing damage associated with climate change, energy efficiency greenhouse gas reporting and emission offsetting
- Local content – Local communities, local materials, advantage for procurement and supply of local companies and local manufacturing
- Labour – principles and rights at work, occupational health and safety
- Gender – focus on women empowerment in our various programs
- Technology transfer – Training of local communities to use the various technologies that form part of our solutions



2030 AGENDA FOR SUSTAINABLE DEVELOPMENT

1 NO POVERTY



2 ZERO HUNGER



5 GENDER EQUALITY



6 CLEAN WATER AND SANITATION



7 AFFORDABLE AND CLEAN ENERGY



13 CLIMATE ACTION



Clean
Mobility



Renewable
Construction
Methods



Clean
Power
Solutions



Creation of
Income
Sources



Clean Drinking
water sources



Clean
Cooking
Solutions



Communal
Medical
Support



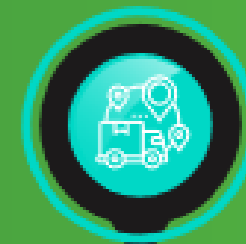
Communal
Educational
Support



Hot water
solutions
for sanitation



Food
Security
Solutions



Clean
Logistics
Chain
Solutions

TECHNOLOGIES WE USE





Our Sustainable Smart Eco Camps comes with renewable energy and solar water heater systems that helps with energy management with tangible results and delivers a quick pay-back.

The choice of building materials has a significant impact on internal thermal conditions and therefore influences air-conditioning demand and operational costs. The use of high thermal mass materials not only provides thermal benefits but also acoustic comforts.

Solar Power

Our mobile solar solutions enable solar PV systems or microgrids to be fully assembled and tested in the factory, and then delivered to remote sites ready for operation. The whole system can be delivered in containers ready to go.



Like energy, water is an essential service that needs to be used intelligently and is often in short supply in remote areas. LiteCon Africa ECO camps are fitted with the NUF technology that has the capacity of producing up to 5,000 liters per hour to help in camp consumptions and operations.

The technology is based on a worldwide patent in water treatment. Ultra-filtration filters at 3.3nm nominal filtration rate. Any water source or lake water (*except saltwater and chemicals such as near mines) can be treated to purify most pathogens, parasites, bacteria, suspended solids, most of the organic matters and most viruses.

Used water is recycled through the same technology for conservation and better practice. The increased productivity level of remote teams who are accommodated in comfortable, energy efficient environments impact on the bottom line.

The container, with panels and cabling installed, simply need to be rolled into position and, after mandatory safety checks and startup procedures, the system will be operational.

Solar Water Heater

An integrated solar water heater, combining the tank and collector into one unit. Our patented SOLO-Plasma integrated solar water geyser is unlike any solar geyser found in the world. Perfect for remote sites. Fully customizable to any existing plumbing.

The solav is the first and only all-in-one, polymer-based solar water heating system. Saving the cost of conventional energy sources like electricity, charcoal, wood, gas or diesel to heat water.



The technology is based on a worldwide patent in water treatment. Ultra-filtration filters at 3.3nm nominal filtration rate.



3. Biogas Technology, Internal Farming and Community Relations

LC Africa builds remote eco camps that come with internal farming activities and manuals to help in production of food for remote teams and community relations.

The eco camps are fitted with Home Biogas Systems that provide clean cooking gas for the remote camps and produce organic fertilizer that is used to internally grow crops for consumption.

The host community learns from this concept and adopts it for their daily cooking and farming activities for a wholesome clean energy transformation. It helps the nearby community to integrate with the remote project and learn sustainable farm management for better yields and to help boost food security.

The host community learns from this concept and adopts it for their daily cooking and farming activities



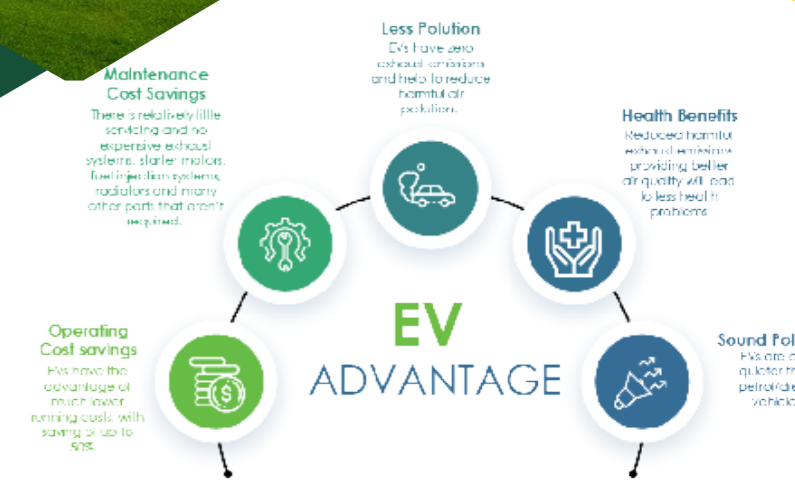
4. Electric Vehicles and Charging Stations

To enhance efficient and carbon free mobility for remote site projects, LC Africa supplies and manages electric vehicles with solar charging stations that help save on fuel costs and conserves the environment by reducing CO2 emissions.

Electric vehicles are perfectly suited for rural and peri-urban areas of Sub-Saharan Africa. Cold temperatures are rare, speeds above 60km per hour are uncommon, and ranges of up to 80km per day are the norm.

The supply of solar energy is effectively endless, making simple and robust solutions attractive from both a technological and an economic perspective. Establishing a CO2 emission-free charging infrastructure and local e-vehicle production also creates jobs and encourages economic and social development.

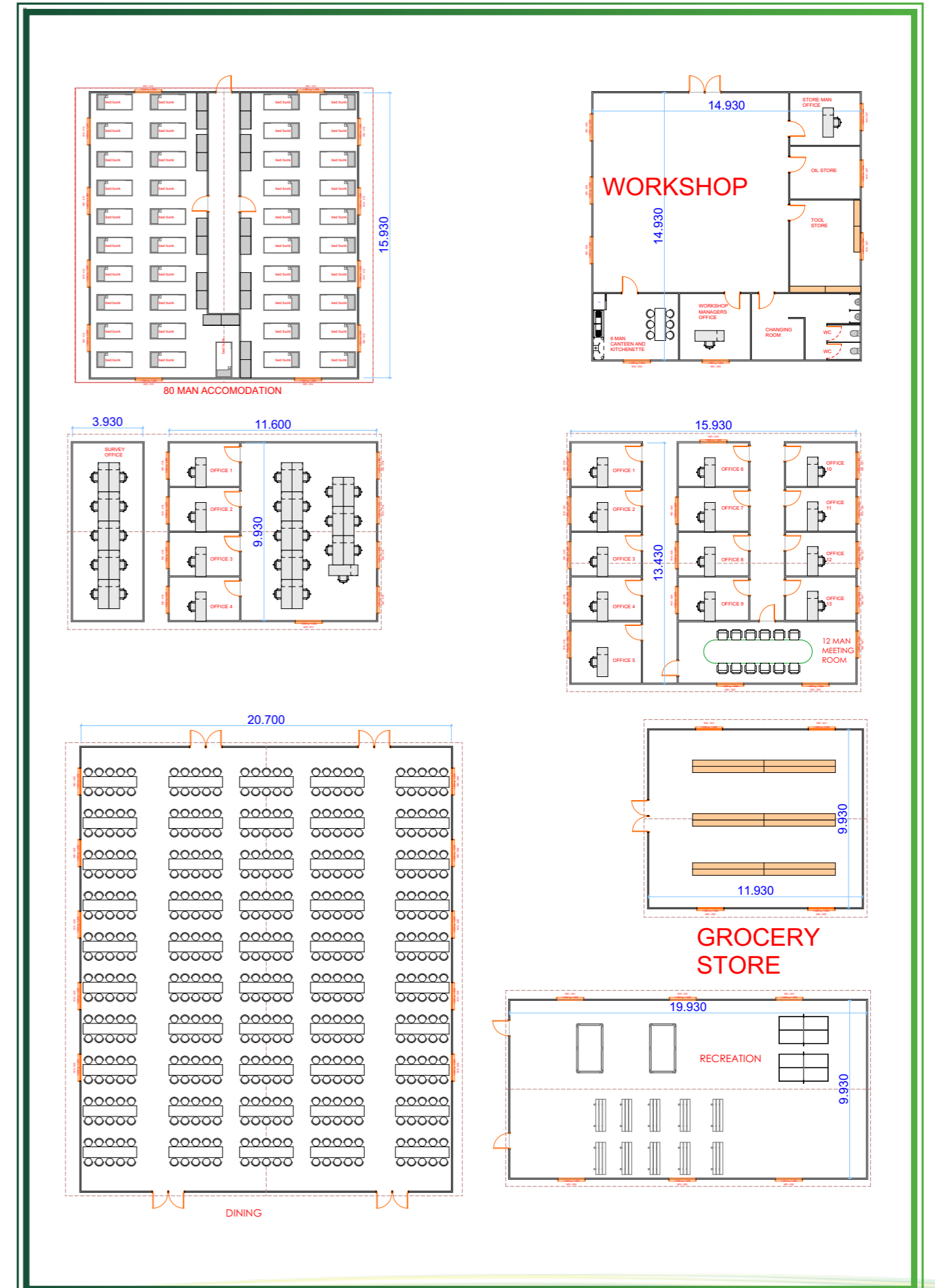
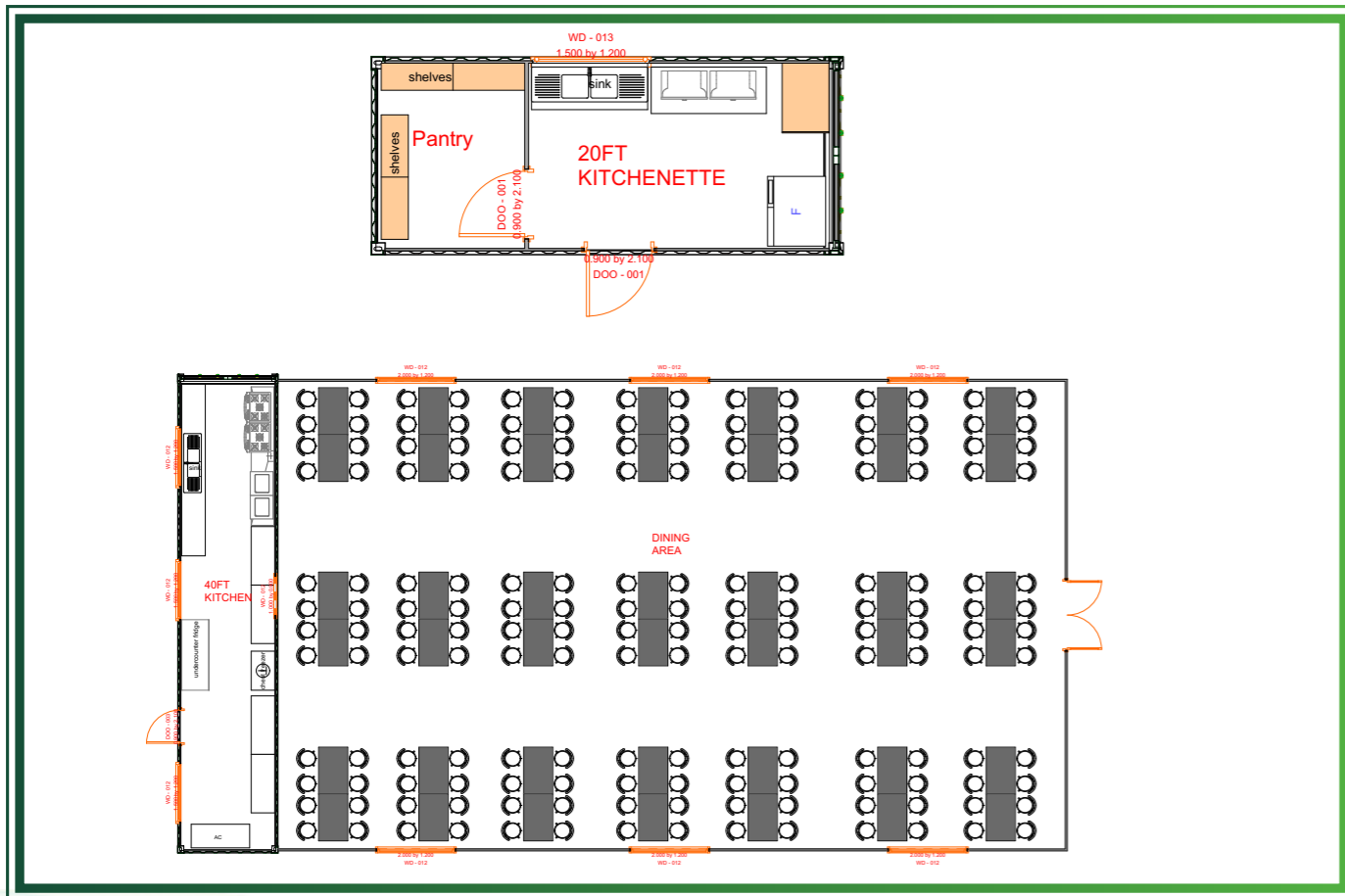
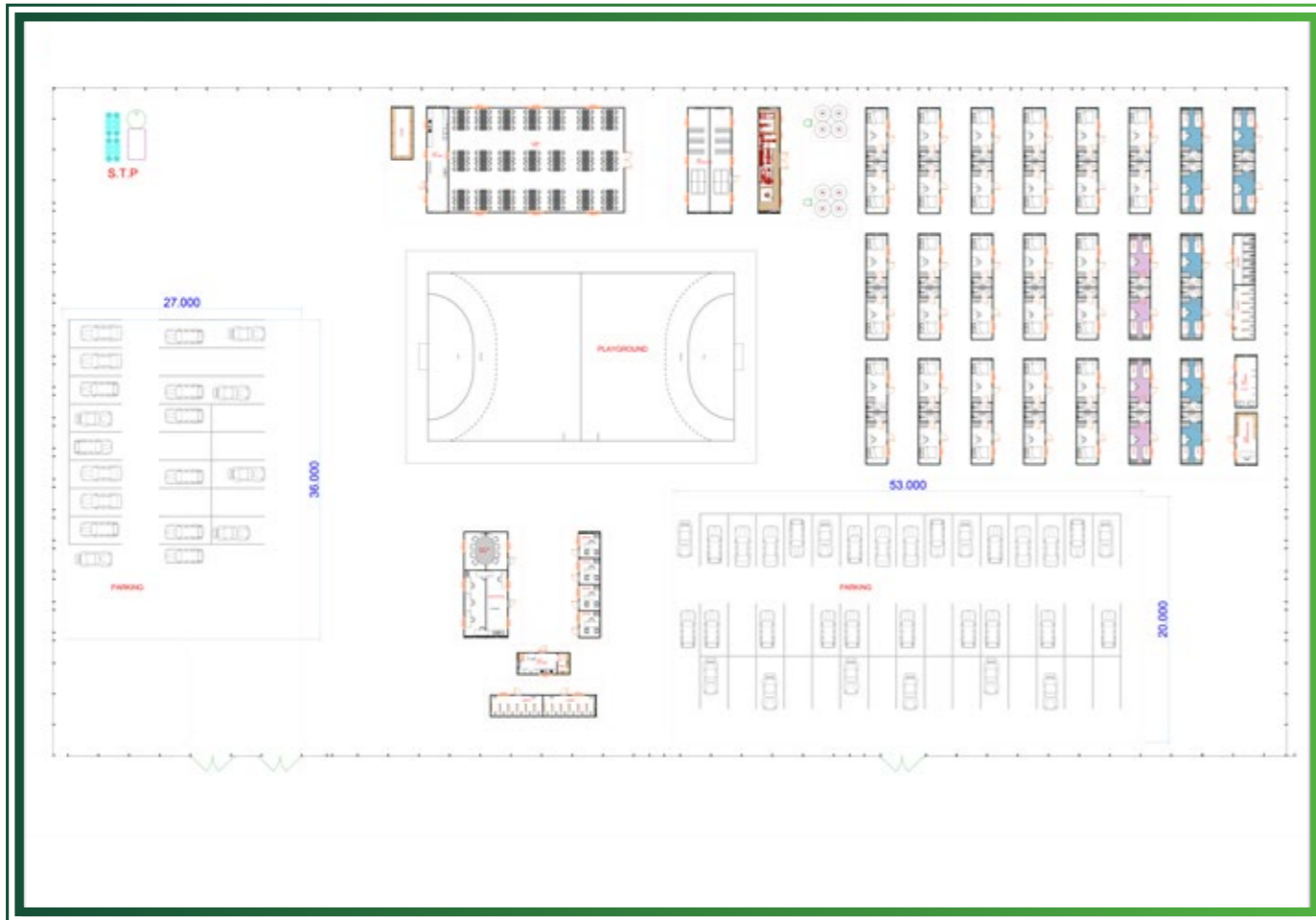
The supply of solar energy is effectively endless, making simple and robust solutions attractive from both a technological and an economic perspective.



Structure & Infrastructure

- Inflated structures
- Prefabs
- Containers
- Camp design
- Tents
- Civil works
- Electrical systems
- Sewage systems
- Reticulation systems



















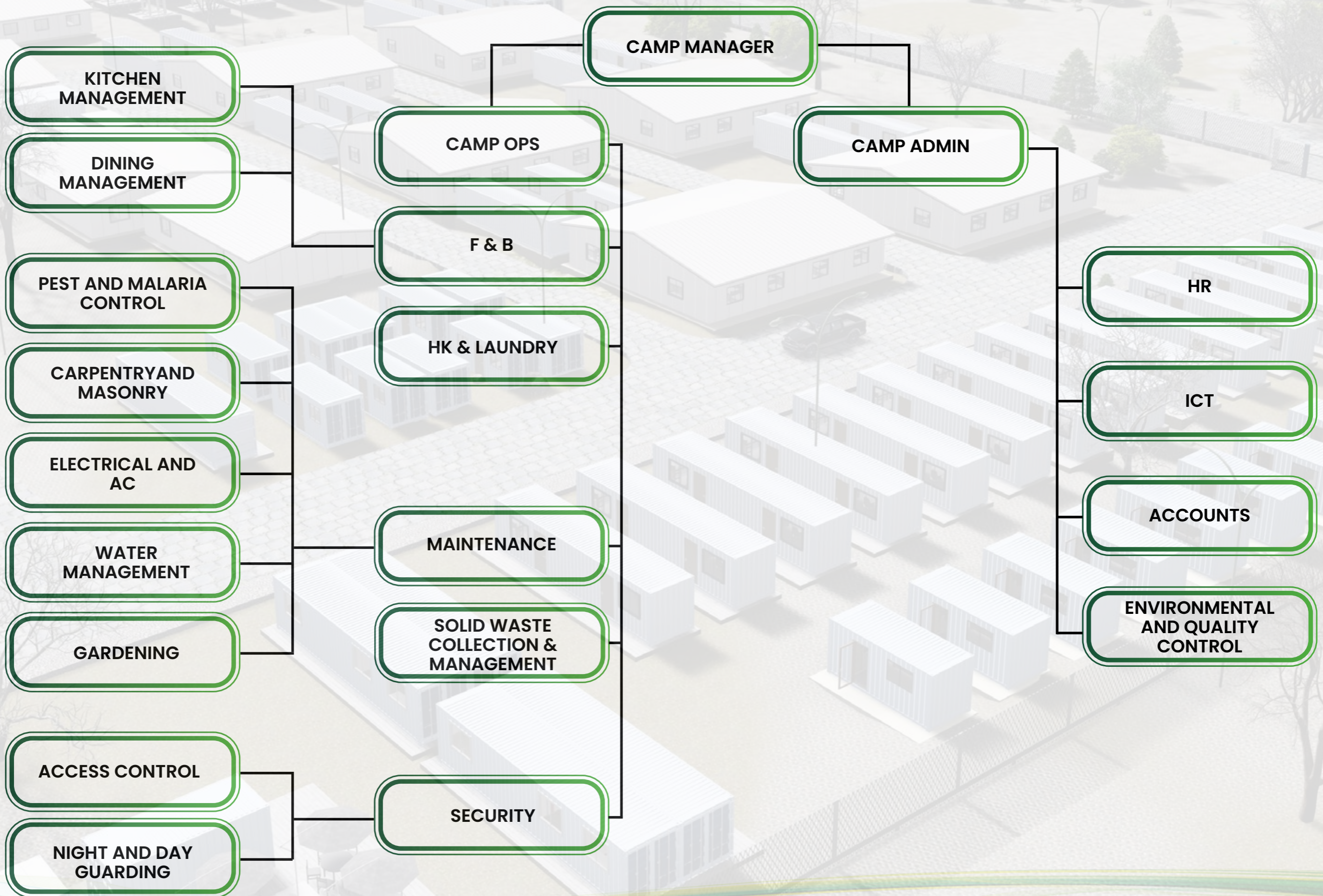




Camp Management Services

- House keeping
- Facility management
- FNB management
- Landscaping
- Water management
- Camp maintenance
- Power management
- Camp security

Tentative Camp Organogram





SOW - Camp management

Dining room

- Dining room will be opened at dining hours
- People will provide service and assistance during these times
- Evacuation of empty cutlery and crockery will be available within the dining room
- Sitting arrangement to be done by the management if and when required
- Housekeeping of the dining room will be also available during breakfast, lunch and dinner

Management and reception

- Every user will be registered through the reception and a key to his room will be provided
- There will be clear information on arrival and departure from the camp
- The users will receive clear induction on safety, evacuation plans, meals, and the facilities in general
- The users will receive a map of the facility
- The users will receive an emergency number in case of security issue or fire issue

Meals management and stocks

- Stock held in dry storage and chiller + reefers
- Meals for visitors will be available on request and early arrangement
- Stocks will arrive every week with the priority of buying locally available quality products
- Regional catering/food providers who source materials locally and mostly around field area
- International standards regarding quality, health, and safety
- Desserts, fruits, coffee, and milk shall be provided with any meal
- 3 meals per day including take away meals to field workers whom cannot get to the dining room

Breakfast	: 0600-0830
Lunch	: 1230 - 1400
Dinner	: 1830 - 2030

Menu

SAMPLE MENU

CYCLED BREAKFAST MENU DISHES

Monday / Tuesday / Wednesday / Thursday / Friday / Saturday / Sunday

BREAKFAST

Fruit platters

Fresh fruit juice platter with 3 varieties and Seasonal whole fruit

Cereals

All bran flakes, corn flakes, Weetabix, Cheerios, porridge oats

Cold meat platters

Cooked on site with three different types chicken

Bakery

Selection of breads with rolls.

Yogurt

Natural yogurt

Coffee and toast section

- White and brown sliced bread for toast
- Fresh milk / low fat milk / fat free milk / 2% milk
- Tea /coffee/ hot chocolate
- Powdered milk
- Bovril/ marmite/ peanut butter/ strawberry jam/ marmalade /honey

COOKED BREAKFAST

Eggs to order

- Fried, scrambled, poached, boiled, omelette
- Sausages, bacon
- Baked beans, Harsh brown, Mushrooms

For night shift employees we will use Dinner menu for the Day to serve the selection of one dry, wet and vegetarian menus.

CYCLE MENUS - DINNER

Monday / Tuesday / Wednesday / Thursday / Friday / Saturday / Sunday

	Monday	Tuesday	Wednesday	Thursday	Friday	Saturday	Sunday
SOUP	Three bean soup	Orange Pumpkin & cinnamon	Shredded Chicken noodle	Roasted tomato and herb	Courgette, leek and parmesan	Rosemary, white bean and spinach	Split pea and bacon
PROTEIN WET AND VEGETARIAN MENU	Prawn curry Fish Curry Paneer Tika masala	Chicken stew Beef masala stew Mixed vegetables curry	Beef Stew Goat stew Vegetables masala	Lamb curry Meat balls curry Beans stew	Chicken Masala Beef Chulash Green grams	Goat stew chops, Fish curry Lentils curry	Beef stew Chicken curry Vegetables masala and egg curry
PROTEIN DRY	Roast beef sirloin green peppercorn sauce Pousin chicken	Marinated roast chicken with thyme gravy Fish fillet	Roast Chicken Beef fillet	Roasted beef sirloin with creamed horseradish sauce Sticky pork ribs	Beef casserole with baby onion, mushroom and fresh herbs	Grilled fish fillets, Marinated chicken pieces Sticky pork ribs	Teriyaki chicken casserole Baked fish with lemon cream sauce
SALAD AND VEGETABLES	Potato salad Kales Cabbages French beans	Coleslaw Braised Cabbages Carrots French beans	Potato salad French beans and Carrots Kales Cabbages	Coleslaw Fried Kales Glazed carrots	Potato salad Cauliflower Carrots Cabbages	Coleslaw Cabbages Carrots	Potato Carrots Baby marrows Cabbages
STARCH	Rosemary roast potato Basmati rice	Lyonnise potato Spiced rice	Baked potato Fried rice	Mashed potato Asian rice	Gourmet potato Brown rice	Baby parsley potato Mexican rice	Layered Potato Savoury rice

All Dinner menu will have optional

1. Fresh sliced bread
2. Fresh milk (full cream and skim), Butter and table margarine;
3. Fresh Juices;
4. Tea, coffee, decaffeinated coffee, milo;
5. A range of sweet, plain and cream biscuits;
6. Pickles, Ketchup, tomato and chilli sauces, Tobasco, mustards, jams, honey;
7. Sugar, sweetener, salt, pepper, paper serviettes, toothpicks.

Take away meals - Packed lunches

Selection of homemade bread and bread rolls, Cake, Muffins, Chapati, Potato wedges. Roast cold meat (beef, chicken), Sausages, Beef samosa, Chips, Potato crops. Lettuce/ tomato/ cheddar cheese/Tuna mayonnaise

Selection of cold meats (hickory ham, salami, pastrami) Roasted peppers , Caramelized onion, Egg mayonnaise

Selection of pickles and mustards
Sandwich special of the day (to run for one week) e.g Chicken sandwiches, vegetables sandwiches, Vegetables and bacon sandwich
Fruit salads, Katchumbari, Tasty tomato, onions and Olive Salad, Kales Salad, Vegetables Salads. Natural yorghurt, Fresh Juices, fresh fruit
Portions of Marmalade, Honey, Jam, peanut butter etc
Peanut, Cashew Nuts
Soups shall be picked from the dinner menus

NOTE:

Special Days, Holidays, Independent days and Theme we shall have special menus sent to the client for approval to fit these days.



SOW - Camp management

Housekeeping

- Each location of the camp shall be cleaned in a daily basis.
- Deep cleaning and disinfection shall be done in the common areas with a high frequency
- Debris collection shall be done also daily and with a suitable frequency
- All common used facilities will be cleaned daily
- All towels and consumables will be checked daily
- Laundry will be done daily
- Bed sheets will be replaced once a week unless in specific cases
- Room cleaning is performed 7 days a week for all guest rooms
- Sanitation will be done following the Covid-19 safety procedures.
- Subcontractor shall include all labor, vehicles, materials such as toilet paper, towels, cleaning, and detergent, etc. and all other costs associated with this service.

Room daily cleaning shall include:

- a. Dust cleaning
- b. Sweeping and mopping
- c. Bathroom deep cleaning and disinfecting
- d. Bed making
- e. Waste emptying and basket liner replacement



SOW - Camp management

Laundry and ironing

- Laundry per person will be done every 2 days
- Laundry will be collected from the room through the laundry bag provided
- Distribution of the laundry will be back to the room
- All laundry that requires ironing will be ironed and folded
- All detergents shall be supplied by Subcontractor and the quality shall be high.
- A laundry record system shall be implemented to ensure that mistaking inhabitants' clothes will be avoided.



SOW - Camp management

Maintenance

- Tools, consumables, spares and manpower for performing the maintenance and reparations are included in the proposal
- Estimated team for the maintenance will be 10-12 people permanently
- Daily checks and daily reports of the following
 1. Environmental control
 2. MALARIA CONTROL
 3. Pest control will be done every 2 months or when required
 4. CARPENTRY AND MASONARY checks daily
 5. ELECTRICAL AND AC checks daily
 6. AC services will be done every month
 7. WATER MANAGEMENT – daily tests
 8. GARDENING – daily treatment



Equipment & Machinery

- Laundry machines and dryers
- Kitchen equipment
- Dining Equipment
- Water purification equipment
- Solar water heating systems
- Water distillation equipment
- Camp furniture

www.liteconfrica.com



Corporate Social Responsibility Program



www.liteconafrika.com

Corporate social responsibility program

Community clinic.

Provide community medical services by constructing and equipping a clinic within the village.



Agriculture training farm

Bring special consultants to assist with training the local community in growing crops such as maize, vegetables



Local Market - Community buying centre

Provide ready-market for community product attracts larger area buyers (hotels etc.)



Community school

Construction of schools and bringing teachers to operate the school program in the village



Constructions training school

Including all artisans such as welding, carpentry, flooring and painting.



Community training in poultry & animal husbandry

Training community members to adopt a structured format to production & husbandry of goat & chicken.



Training programs



Agriculture:
Farmer's kit program. Helping the local farmers with the right programs for their crops to increase efficiency and production



Health, Safety & Environment:
Training local workforce to work in a safe environment including Safety gear usage, planning ahead, and risks assessment at work.



Health and hygiene:
How to maintain a healthier and cleaner environment to avoid diseases and medical problems.



Hospitality and tourism:
Housekeeping, laundry and ironing lessons to be able and work in the future planned facilities of the project.



Hospitality and tourism:
Cooking, baking, kitchen maintenance, dining room management, Kitchen HSE and hygiene.



Hospitality and tourism:
Tourism with the focus on Madagascar and the coast area. How to increase tourism and provide better tourist services.



Fishing and Aquaculture:
Methods and efficiency in fishing including fish growing and fish handling.



English School
In combination with focused vocational and technical training, will allow the local labor force to acquire long-term jobs and hence stable income



Medical and first aid.
Teaching the local community to provide first aid such as CPR (Cardiopulmonary resuscitation) as well as first aid kit usage

Recommendations



To Whom It May Concern:

Mr. Omri Cohen and Litecon have been involved in various projects in Mozambique in the spaces of logistics and support services with great success.

Examples of the above where we participated:

Re-commission of the ENHL Camp in Palma, Cabo Delgado province.

Support services for the installation of RAINTS Camp in Palma, Cabo Delgado province.

We strongly recommend Mr. Omri and the company Litecon to provide future services in the country and rely on their ability and experience to manage the different service providers that will support the ongoing activities of the project.

Best regards,

Nuno Donga

Maputo, 14 of December 2021

Torres Rani,
Avenida Marginal, Talhao 141, 6 Andar
P.O.Box 96
Maputo, Mozambique

Recommendations



1st March 2021

REF: LETTER OF RECCOMENDATION

Dear Sir/Madam,

I am writing this letter to you as a recommendation for the excellent services provided by ISM Africa Ltd aka ISM Containers.

We contracted them to undertake a project that entailed 1x40'ft container converted into office and storage space at Karen near Talisman restaurant.

The projects execution from point of contact, being guided through the design process, quality of conversation services to the results delivery was phenomenal. Great workmanship was also evident.

ISM containers offer the most competitive rates in town and they also extend exemplary customer service.

I highly recommend the services of ISM containers and I look forward to working with again

Yours sincerely,

The Flower Factory.

Phone: +254745253802 | Address: 320 Ngong Rd, Nairobi
theflowerfactory.co.ke | info@theflowerfactory.co.ke

Recommendations



18 June 2020

CERTIFICATION

To whom it may concern:

ISM GLOBAL STRATEGY is a trading and procurement specialist that has been working with us for the past 4 months supplying COVID 19 PPE and equipment.

This is to confirm that the company is professional and honest with high abilities to solve supply and logistics problems all throughout.

We are considering ISM GLOBAL STRATEGY as a preferred vendor.

Very Truly Yours,

MARK S. AYALDE
Director – Procurement
Dole Philippines, Inc.

Recommendations



Date: 2nd April 2020

TO WHOM IT MAY CONCERN

RE: ISM AFRICA LIMITED

I'm writing to recommend ISM Africa Ltd. We have been using their services for the procurement and inspection for a range of machinery out of China, for use at our farm in Naivasha, Kenya.

We have found them to be reliable, efficient and trustworthy.

I would happy recommend their services and if you have any questions, please feel free to contact me.

Kind Regards

Yours faithfully,
For: Oloidien Estate & Engineering Limited

Alasdair Keith
Managing Director

